



vonRollfix - collars for pipe-connection

vonRollfix pipe-collars / intermediate collars

DN	item-no.	cast-iron/cast-iron without supporting ring page 3		cast-iron/PE with supporting ring page 4		cast-iron/PE without supporting ring page 4		cast-iron/steel without supporting ring page 5		Steel/PE with supporting ring page 6		Steel/PE without supporting ring page 7	
		DE1	DE2	DE1	DE2	DE1	DE2	DE1	DE2	DE1	DE2	DE1	DE2
50	116653					58x50							
	116766			58x56									
	116815									48.3x50			
	116819			58x50									
	116820									54x50			
	116826									54x56			
	118716	58x58											
60	116656												60.3x63
	116658					68x63							
	116673					68x50							
	116810							68x64					
	116816									60.3x63			
	116821									64x63			
	116830			68x50									
	116831			68x63									
	116836			68x56									
		118700	68x68										
70	116772					78x75							76.1x75
	116829			78x75						76.1x75			
80	116660												83x75
	116740									83x90			
+	116822									83x90			
	116827									83x75			
	118717	83x83											
90	116762			89x90						88.9x90			
	116811							89x83					
	116832			89x90						88.9x90			
	116837			89x75									
	118701	89x89				89x90							88.9x90
100	116647									114.3x110			
	116741									106x110			
	116763			110x110									114.3x110
	116780												
	116812							110x106					
	116823									106x110			
	116833			110x110						108x110			
	118702	110x110				110x110							108x110
125	116649									152x160			
	116669												139.7x125
	116742									131/133x125			
	116764			135x125									
	116813							135x131					
	116824									131/133x125			
	116825									152x160			
	116834			135x125									
	116838									139.7x125			
	118703	135x135											
150	116672												168.3x160
	116765			160x160									
	116814							160x152					
	116835			160x160						159x160			
	118704	160x160				160x160							159x160
200	116769			210x200									
	116773					210x200							
	116777									219.1x200			
	116784							210x219.1					
	118713	210x210											
250	116758					274x250							
	118714	274x274											
300	116759					326x315							
	118715	326x326											

+ for S16 PE pipes

Right to change specifications reserved

Application examples

vonRollfix's pipe-collars can be used for connecting pipes and fittings in non-pressurised pipelines and can take loads of up to 3 bars.

They are suitable for flow-temperatures up to +80°C.

vonRollfix's pipe-collars and pipe-interfaces can be used for various types of piping and are suitable for use both indoors or outdoors:

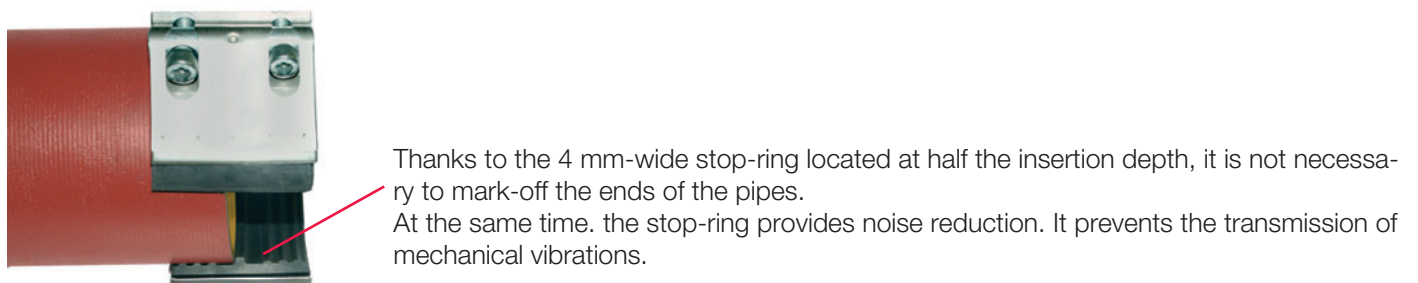
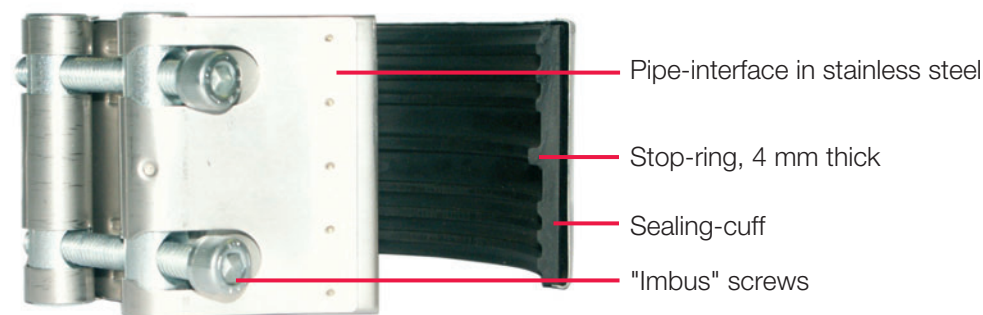
for wastewater-piping, industrial piping, drainage piping, in the construction and civil engineering areas, in industrial plant, in ship-building and other applications.

Design

The body of the collar is made of chromium-nickel steel, with a screw clamp for Imbus keys.

A sealing-cuff made of high-quality synthetic rubber is used for the compensation of differences in the outside diameters of the pipes.

This also deals with and dampens any shocks and vibrations in the piping system.

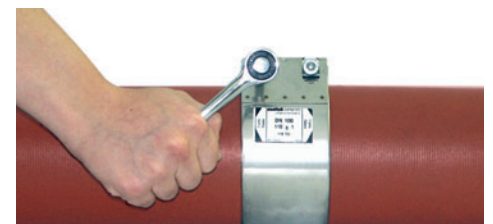


Connection

Connection can be done quickly and simply:

Cut tubes to length, place the vonRoll pipe-collar over the joint and tighten up the hexagon-socket screws with a ratchet-screwdriver or a "Imbus" key.

When connecting PE plastic pipes, a supporting ring must be inserted into the plastic pipes.



vonRollfix pipe-collars / intermediate collars

Making joints

vonRollfix's pipe-collars are suitable for use with all kinds of pipes and fittings. They are available for diameters in the range of DN 50 - 300 / 48.3 - 326 mm. Their fitting is very simple and economical.



Connection without supporting ring,

two „hard“ pipes,
e.g. cast-iron to cast-iron



Connection with a supporting ring,

between a „hard“ and a „soft“ pipe,
e.g. cast-iron to plastic

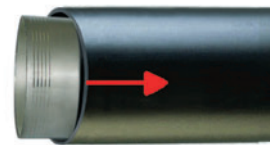


Connection with two supporting rings,

between two „soft“ pipes,
e.g. plastic to plastic

Interfacing two PE pipes

When connecting PE plastic piping, supporting rings are required. These are inserted in the ends of the plastic pipes before the connection is made.



Connection possibilities

Using vonRoll pipe-collars and pipe-interfaces, pipes made of various materials can be connected together.

- pipes of same material and identical outside diameters
e.g. cast-iron - cast-iron, steel - steel etc.

cast-iron - cast-iron



- pipes made of different materials with different outer diameters
e.g. cast-iron - plastic, cast-iron - steel, steel - plastic etc.

cast-iron – PE



cast-iron – steel



steel – PE



vonRollfix pipe-collars / intermediate collars

vonRollfix pipe-collars

Interconnection of pipes and fittings in cast-iron.

Pipe collar in chromium-nickel steel.

Sealing-cuff provides compensation for varying outside diameters.

It also absorbs and dampens any shocks and vibrations. At half the insertion depth, there is a 4 mm-wide stop-ring. It is therefore not necessary to mark-off the insertion depth on the ends of the pipes.

At the same time, the stop-ring provides noise reduction and prevents the transmission of mechanical vibrations.

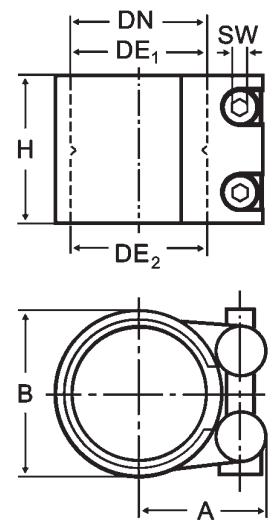
For use at temperatures up to 80°C.



vonRollfix pipe-collar cast-iron/cast-iron, without supporting ring

DN	DE ₁	DE ₂	A	B	H	SW	GP*	weight	item-no.	suissetec
	mm	mm	mm	mm	mm	mm	pcs	kg		
50	58	58	45	66	45	5	50	0.3	118716	-
60	68	68	52	78	55	5	50	0.3	118700	225.131
80	83	83	62	100	65	5	20	0.4	118717	-
90	89	89	62	100	65	5	20	0.4	118701	225.132
100	110	110	75	120	65	6	30	0.6	118702	225.133
125	135	135	88	145	90	6	10	0.8	118703	225.134
150	160	160	104	175	90	6	10	1.4	118704	225.135
200	210	210	130	225	90	6	8	1.0	118713	225.136
250	274	274	162	291	90	6	1	1.4	118714	225.137
300	326	326	189	344	90	6	1	1.5	118715	225.138

* GP= packing unit



vonRollfix pipe-collars / intermediate collars

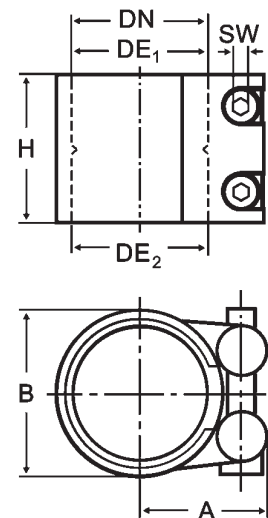
vonRollfix intermediate collars

Interconnection of pipes and fittings, cast-iron / various materials.
 Pipe collar in chromium-nickel steel.
 Sealing-cuff provides compensation for varying outside diameters.
 It also absorbs and dampens any shocks and vibrations. At half the insertion depth, there is a 4 mm-wide stop-ring. It is therefore not necessary to mark-off the insertion depth on the ends of the pipes.
 At the same time, the stop-ring provides noise reduction and prevents the transmission of mechanical vibrations.
 For use at temperatures up to 80°C.



vonRollfix intermediate collar cast-iron/PE, with supporting ring

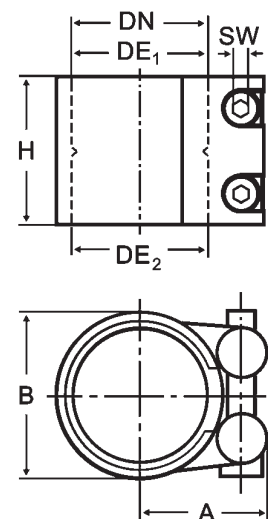
DN	DE ₁	DE ₂	A	B	H	SW	GP*	weight	item-no.	suissetec
	mm	mm	mm	mm	mm	mm	pcs.	kg		
50	58	50	37	66	45	5	50	0.3	116819	-
50	58	56	37	66	45	5	50	0.2	116766	-
60	68	50	52	78	55	5	50	0.4	116830	227.231
60	68	56	52	78	55	5	50	0.4	116836	227.231
60	68	63	52	78	55	5	50	0.3	116831	227.231
70	78	75	56	88	65	5	20	0.4	116829	227.232
90	89	75	62	100	65	5	20	0.4	116837	227.232
90	89	90	62	100	65	5	20	0.4	116762	227.232
90*	89	90	62	100	65	5	20	0.4	116832	227.232
100	110	110	75	120	65	6	30	0.6	116763	227.233
100*	110	110	75	120	65	6	30	0.6	116833	227.233
125	135	125	88	145	90	6	10	0.9	116764	227.234
125*	135	125	88	145	90	6	10	0.9	116834	227.234
150*	160	160	104	175	90	6	10	1.2	116835	227.235
150	160	160	104	175	90	6	10	1.2	116765	227.235
200	210	210	130	225	90	6	8	1.3	116769	227.236



+ for S16 PE-pipes
 * GP= packing unit

vonRollfix intermediate collar cast-iron/PE, without supporting ring

DN	DE ₁	DE ₂	A	B	H	SW	GP*	weight	item-no.	suissetec
	mm	mm	mm	mm	mm	mm	pcs.	kg		
50	58	50	37	66	45	5	50	0.2	116653	-
60	68	50	52	78	55	5	50	0.3	116673	227.151
60	68	63	52	78	55	5	50	0.3	116658	227.151
70	78	75	56	88	65	5	20	0.4	116772	227.152
90	89	90	62	100	65	5	20	0.4	118701	227.152
100	110	110	75	120	65	6	30	0.6	118702	227.153
150	160	160	104	175	90	6	10	1.4	118704	227.155
200	210	200	130	225	90	6	8	1.4	116773	227.156
250	274	250	162	291	90	6	1	1.4	116758	227.157
300	326	315	189	344	90	6	1	1.5	116759	227.158



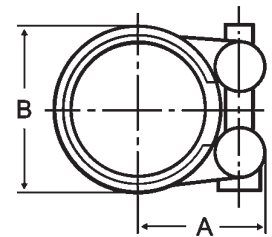
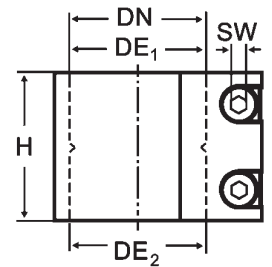
* GP= packing unit

Right to change specifications reserved

vonRollfix intermediate collar cast-iron/steel, without supporting ring

DN	DE₁	DE₂	A	B	H	SW	GP*	weight	item-no.	suissetec
	mm	mm	mm	mm	mm	mm	pcs.	kg		
60	68	64	52	78	55	5	50	0.3	116810	227.131
90	89	83	62	100	65	5	20	0.4	116811	227.132
100	110	106	75	120	65	6	30	0.6	116812	227.133
125	135	131	88	145	90	6	10	0.7	116813	227.134
150	160	152	104	175	90	6	10	1.2	116814	227.135
200	210	219.1	130	225	90	6	1	1.4	116784	227.136

* GP= packing unit



vonRollfix pipe-collars / intermediate collars

vonRollfix pipe-collars

Interconnection of pipes and fittings, steel / various materials.

Pipe collar in chromium-nickel steel.

Sealing-cuff provides compensation for varying outside diameters.

It also absorbs and dampens any shocks and vibrations. At half the insertion depth, there is a 4 mm-wide stop-ring. It is therefore not necessary to mark-off the insertion depth on the ends of the pipes.

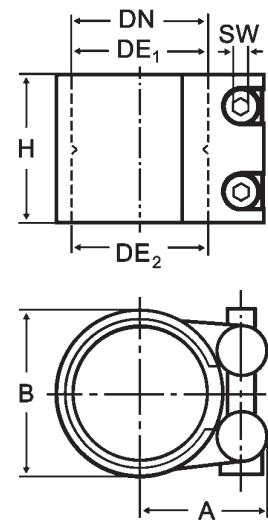
At the same time, the stop-ring provides noise reduction and prevents the transmission of mechanical vibrations.

For use at temperatures up to 80°C.



vonRollfix intermediate collar steel/PE, with supporting ring

DN	DE ₁	DE ₂	A	B	H	SW	GP*	weight	item-no.	suissetec
	mm	mm	mm	mm	mm	mm	pcs.	kg		
50	48.3	50	37	66	45	5	50	0.3	116815	-
50	54	50	37	66	45	5	50	0.3	116820	-
50	54	56	37	66	45	5	50	0.2	116826	-
60	60.3	63	52	78	55	5	50	0.4	116816	-
60	64	63	52	78	55	5	50	0.3	116821	-
70	76.1	75	56	88	65	5	20	0.4	116829	-
80	83	75	62	100	65	5	20	0.5	116827	-
80	83	90	62	100	65	5	20	0.5	116740	-
80+	83	90	62	100	65	5	20	0.5	116822	-
90	88.9	90	62	100	65	5	20	0.4	116762	-
90+	88.9	90	62	100	65	5	20	0.4	116832	-
100	106	110	75	120	65	6	30	0.6	116741	-
100+	106	110	75	120	65	6	30	0.6	116823	-
100+	108	110	75	120	65	6	30	0.6	116833	-
100	114.3	110	78	126	65	6	30	0.7	116647	-
125	131/133	125	88	145	90	6	10	0.9	116742	-
125+	131/133	125	88	145	90	6	10	0.9	116824	-
125+	139.7	125	88	145	90	6	1	0.9	116838	-
125	152	160	104	175	90	6	10	1.3	116649	-
125+	152	160	104	175	90	6	10	1.3	116825	-
150+	159	160	104	175	90	6	10	1.2	116835	-
200	219.1	200	130	225	90	6	1	1.6	116777	-



+ for S16 PE-pipes

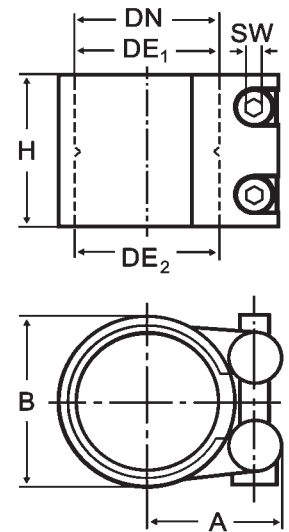
* GP= packing unit

Right to change specifications reserved

vonRollfix intermediate collar steel/PE, without supporting ring

DN	DE₁	DE₂	A	B	H	SW	GP*	weight	item-no.	suissetec
	mm	mm	mm	mm	mm	mm	pcs.	kg		
60	60.3	63	52	78	55	5	50	0.3	116656	-
70	76.1	75	56	88	65	5	20	0.4	116772	-
80	83	75	62	100	65	5	20	0.5	116660	-
90	88.9	90	62	100	65	5	20	0.4	118701	-
100	108	110	75	120	65	6	30	0.6	118702	-
100	114.3	110	78	126	65	6	30	0.6	116780	-
125	139.7	125	88	145	90	6	1	1.4	116669	-
150	159	160	104	175	90	6	10	1.4	118704	-
150	168.3	160	104	175	90	6	1	1.2	116672	-

* GP= packing unit



vonRollfix pipe-collars / intermediate collars

Supporting rings for PE pipes

When interconnecting PE plastic pipes, a supporting ring is obligatory.

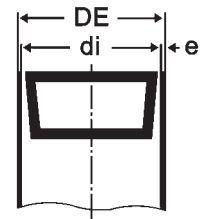
Supporting ring in nickel-chromium steel.

The supporting ring is inserted into the plastic pipe where the joint is to be made and thus reliably protects it from being deformed.



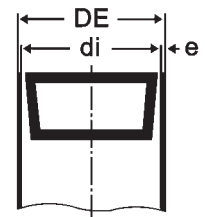
Supporting ring for standard-series PE

DE	di	e	item-no.	suissetec
mm	mm	mm		
50	44	3	116600	-
56	50	3	116601	-
63	57	3	116602	-
75	69	3	116603	-
90	83	3.5	116604	-
110	101.4	4.3	116606	-
125	115.4	4.8	116609	-
160	147.6	6.2	116612	-
200	187.6	6.2	116615	-



Supporting ring for series S16 PE

DE	di	e	item-no.	suissetec
mm	mm	mm		
90	84	3	116605	-
110	103	3.5	116607	-
125	117.2	3.9	116610	-
160	150	5	116613	-



vonRollhydro

vonRoll hydro (suisse) ag
von roll-strasse 24
ch-4702 oensingen
phone +41 62 388 11 11
fax +41 62 388 11 78
www.vonroll-hydro.ch
info@vonroll-hydro.ch